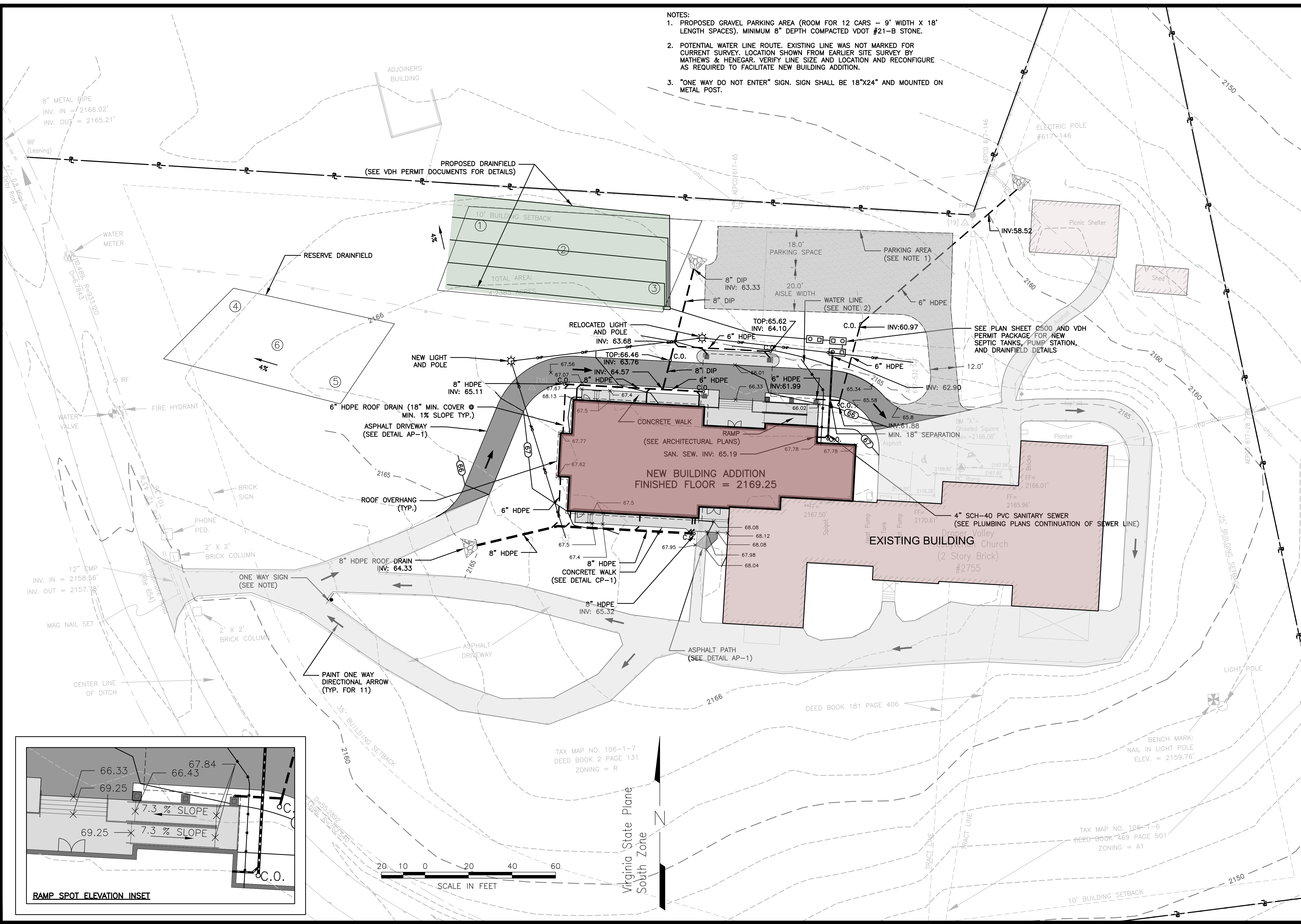


FIRST FLOOR PLAN  
 SCALE: 1/8" = 1'-0"  
 NORTH

Aug 06, 2019 - 1:59pm \\data01\Projects\2018\20181688\Engineering\CAD\20181688\_SHEET\_SITE.dwg

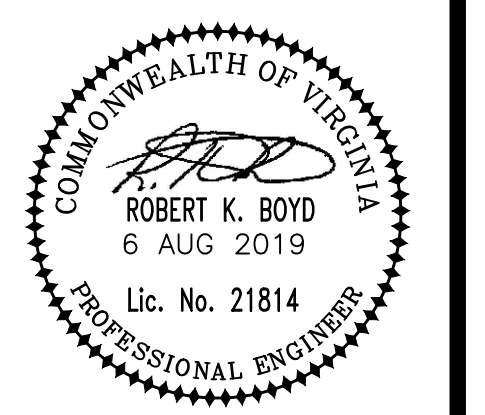
- NOTES:
1. PROPOSED GRAVEL PARKING AREA (ROOM FOR 12 CARS - 9' WIDTH X 18' LENGTH SPACES), MINIMUM 8" DEPTH COMPACTED VDOT #21-B STONE.
  2. POTENTIAL WATER LINE ROUTE, EXISTING LINE WAS NOT MARKED FOR CURRENT SURVEY. LOCATION SHOWN FROM EARLIER SITE SURVEY BY MATHEWS & HENEGAR. VERIFY LINE SIZE AND LOCATION AND RECONFIGURE AS REQUIRED TO FACILITATE NEW BUILDING ADDITION.
  3. "ONE WAY DO NOT ENTER" SIGN. SIGN SHALL BE 18"X24" AND MOUNTED ON METAL POST.



**HURT & PROFFITT**  
 1861 PRATT DRIVE, SUITE 1100  
 BLACKSBURG VA 24060  
 1.800.763.5596 TOLL FREE  
 540.552.5592 MAIN  
 540.552.5729 FAX  
 ENGINEERING • SURVEYING • LAND DEVELOPMENT • ENVIRONMENTAL  
 GEOTECHNICAL • CONSTRUCTION TESTING & INSPECTION • CULTURAL RESOURCES

**SITE PLAN  
 ADDITION FOR  
 DRAPER VALLEY PRESBYTERIAN CHURCH  
 DRAPER, VA**

PROJECT NO.	20181688
LAT.	36.92500
LONG.	-80.30683
DATE:	6 AUG 2019
DRAWN BY:	BEC
CHECKED BY:	MTC



**SITE PLAN**  
 SHEET NO.  
**C300**